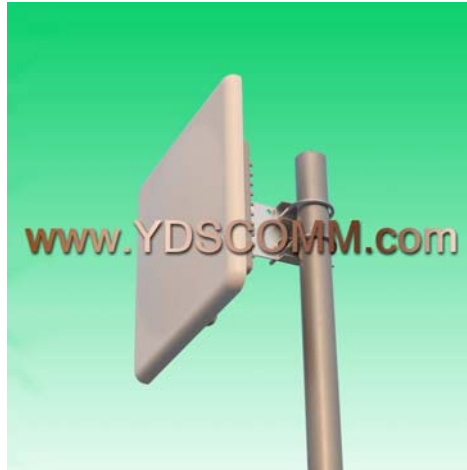


**YDS2425PT16.5V1-N(F)****2400-2500 MHz 16.5 dBi Vertical Polarization Patch Antenna**

Antenna Model No.	YDS2425PT16.5V1-N(F)
Frequency Range	2400-2500 MHz
Polarization	Vertical
Gain	16.5 dBi
Horizontal Beamwidth	20 °
Vertical Beamwidth	20 °
Front-to-back ratio	≥28 dB
Nominal Impedance	50 Ohms
VSWR	≤ 1.5
Maximum Power	20 Watts
Lightning protection	DC ground
Connector	N Female
Dimensions	306×306×25 mm
Weight	1.4 kg
Reflector	ABS
Colour	White
Adjustable Angle	0 ~ 60 °
Operating temperature	-40 ~ 60 °C
Wind Load	60 m/s
Mast Mount Diameter	35-50 mm